

Bringing data together – The National Digital Twin

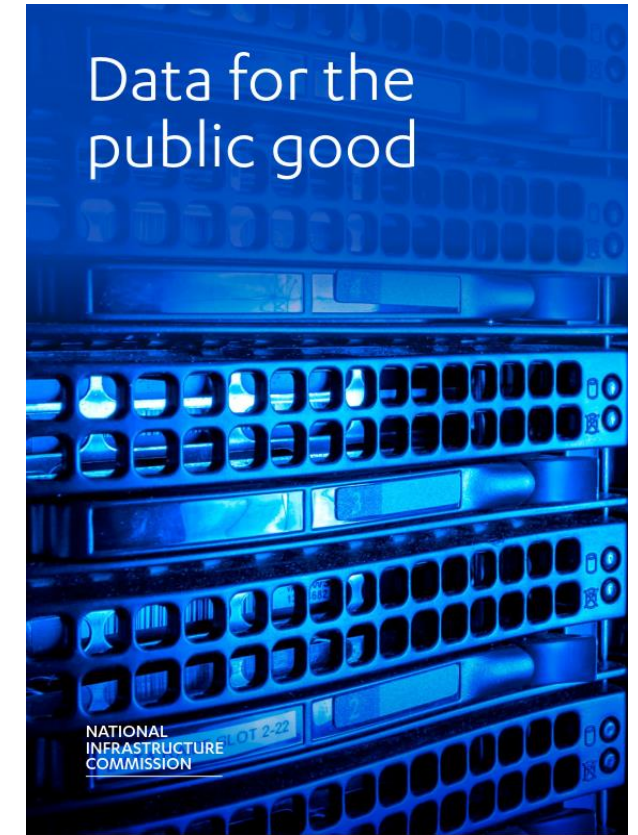
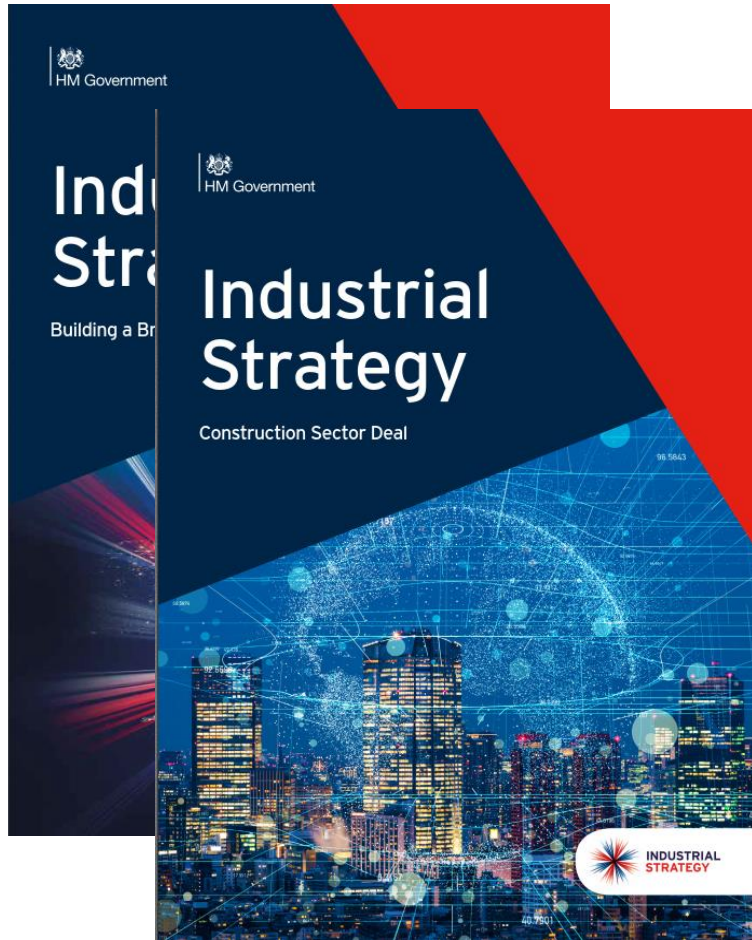
An ecosystem of connected digital twins enabling better decisions faster across the built environment

What is the context for the National Digital Twin?

What is the National Digital Twin?

What is being done to deliver it?

Aligned government messages



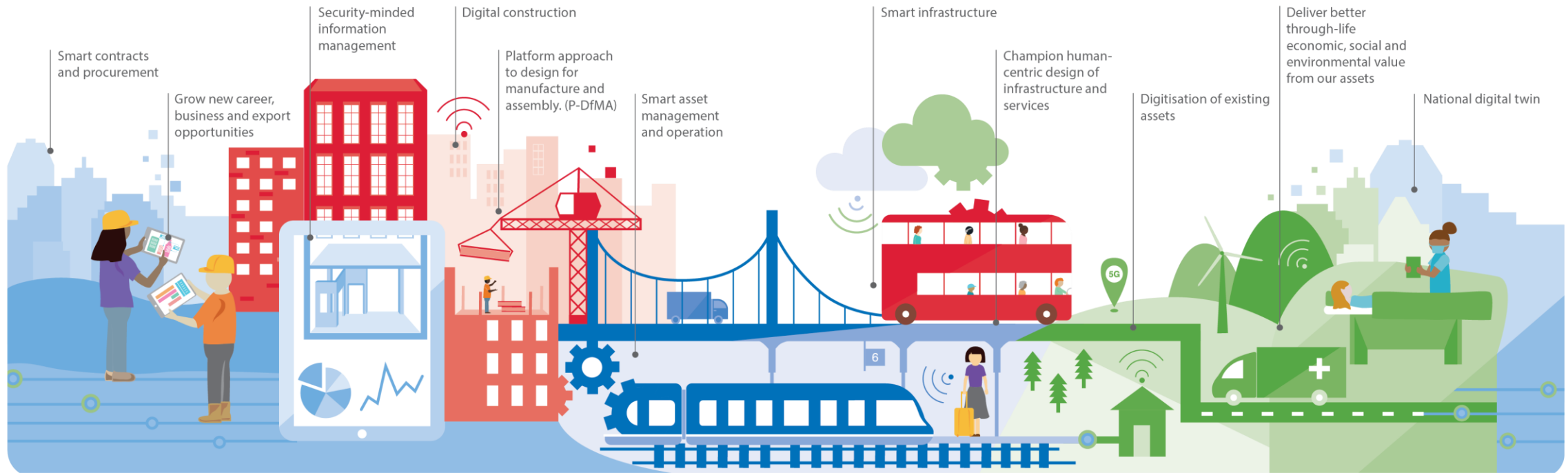
Data for the public good



Recommendations:

1. **A National Digital Twin** – to enable better outcomes from our built environment
2. **An Information Management Framework** – to enable secure data sharing and effective information management
3. **A Digital Framework Task Group** – to provide coordination of key players

This is Digital Built Britain



Design

Use best practice, secure by default, information management and digital techniques to get data right from the start and design better-performing homes, buildings and infrastructure.

Build

Exploit new and emerging digital construction, information management, and manufacturing technologies and techniques to improve safety, quality and productivity during construction.

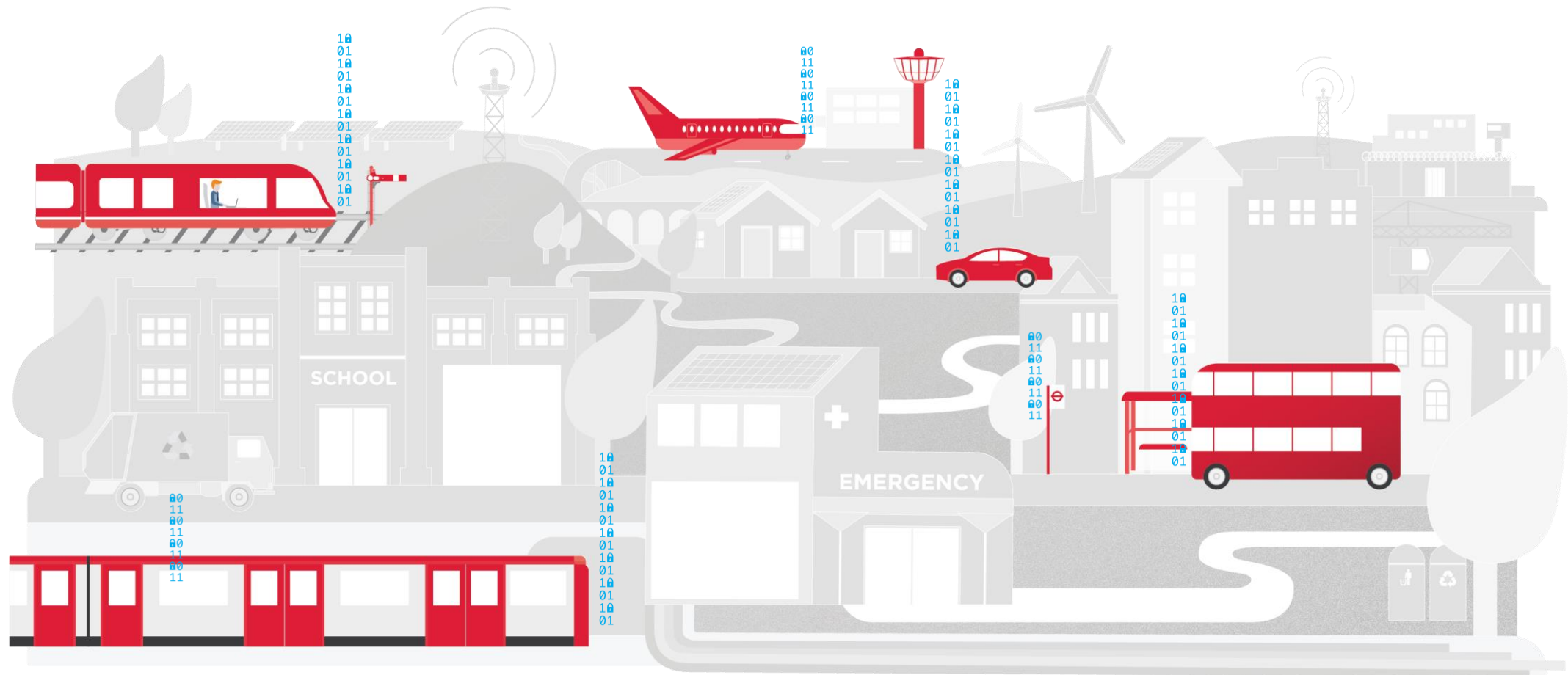
Operate

Use effective information management to transform the performance of the built environment and the services it delivers.

Integrate

Understand how the built environment can improve citizens' quality of life and use that information to drive the design and build of our economic and social infrastructure and the operation and integration of the services they deliver.

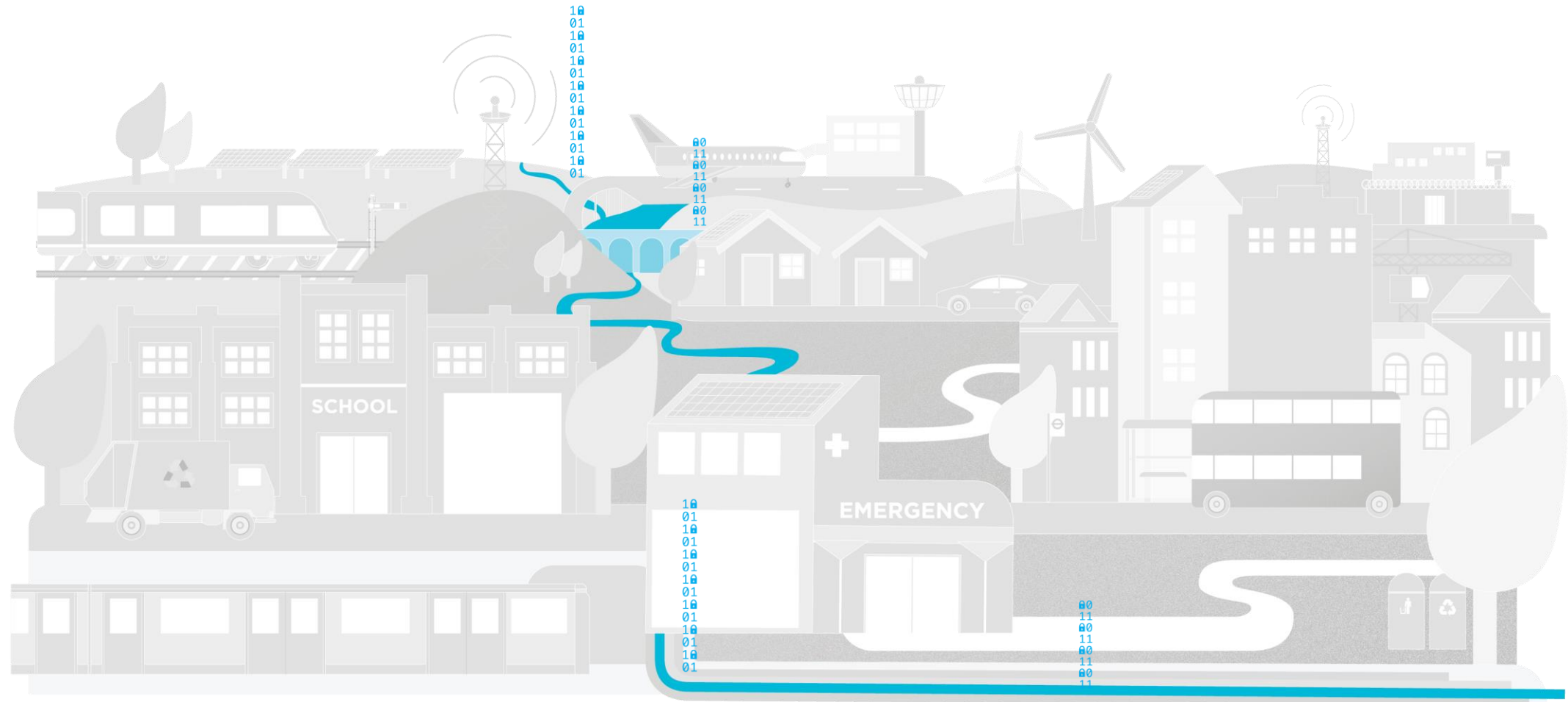
Transport



Energy



Water



Telecoms



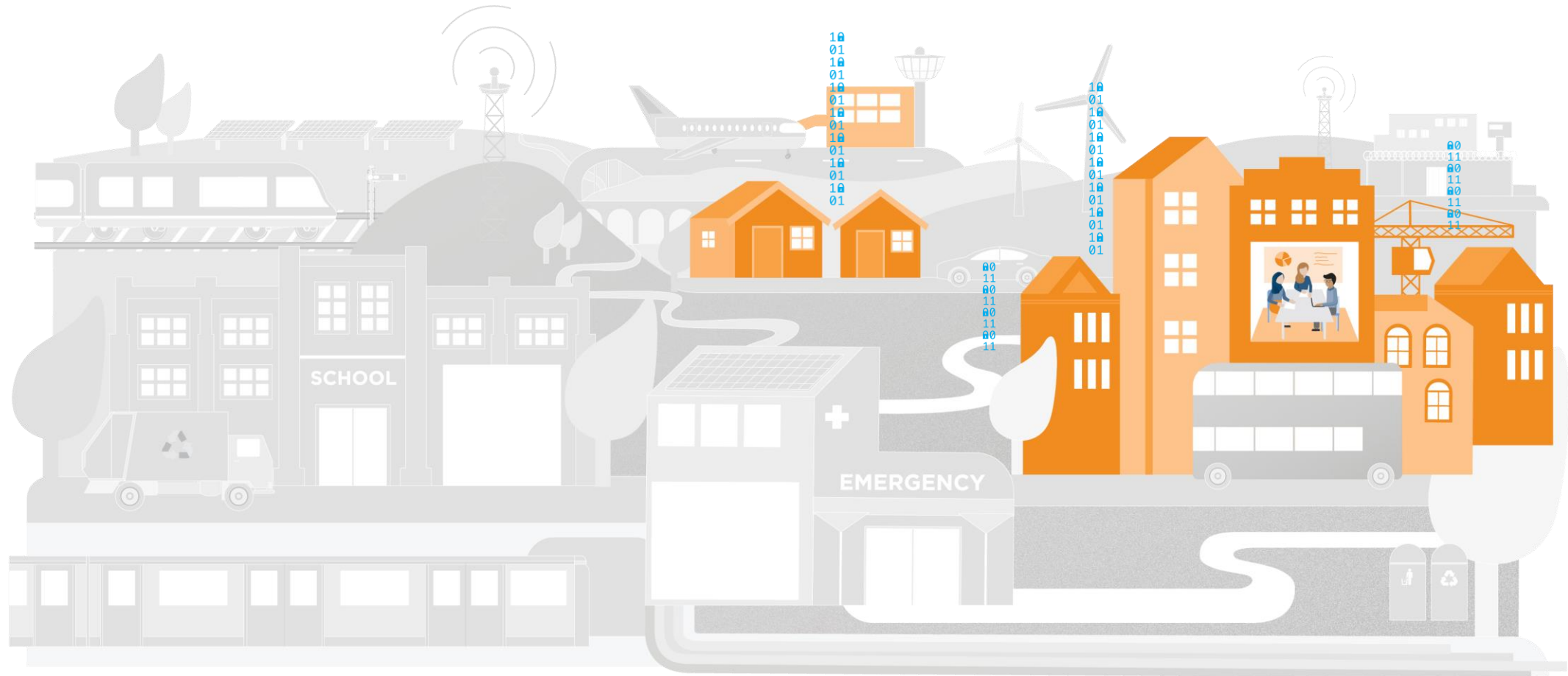
Waste



Social infrastructure



Residential, commercial and industrial



Interface with the natural environment



Built environment

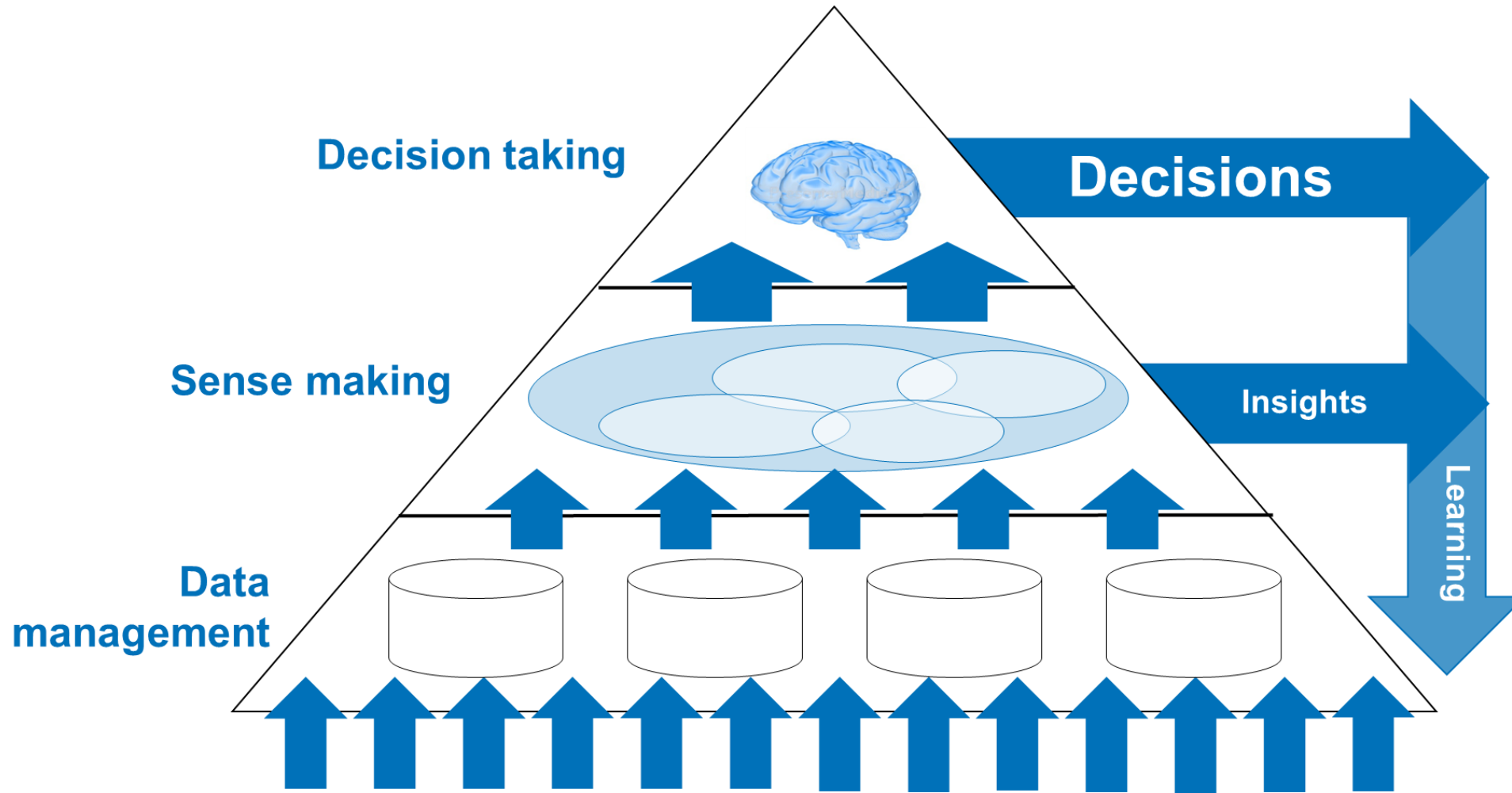


Systems-based view of the built environment

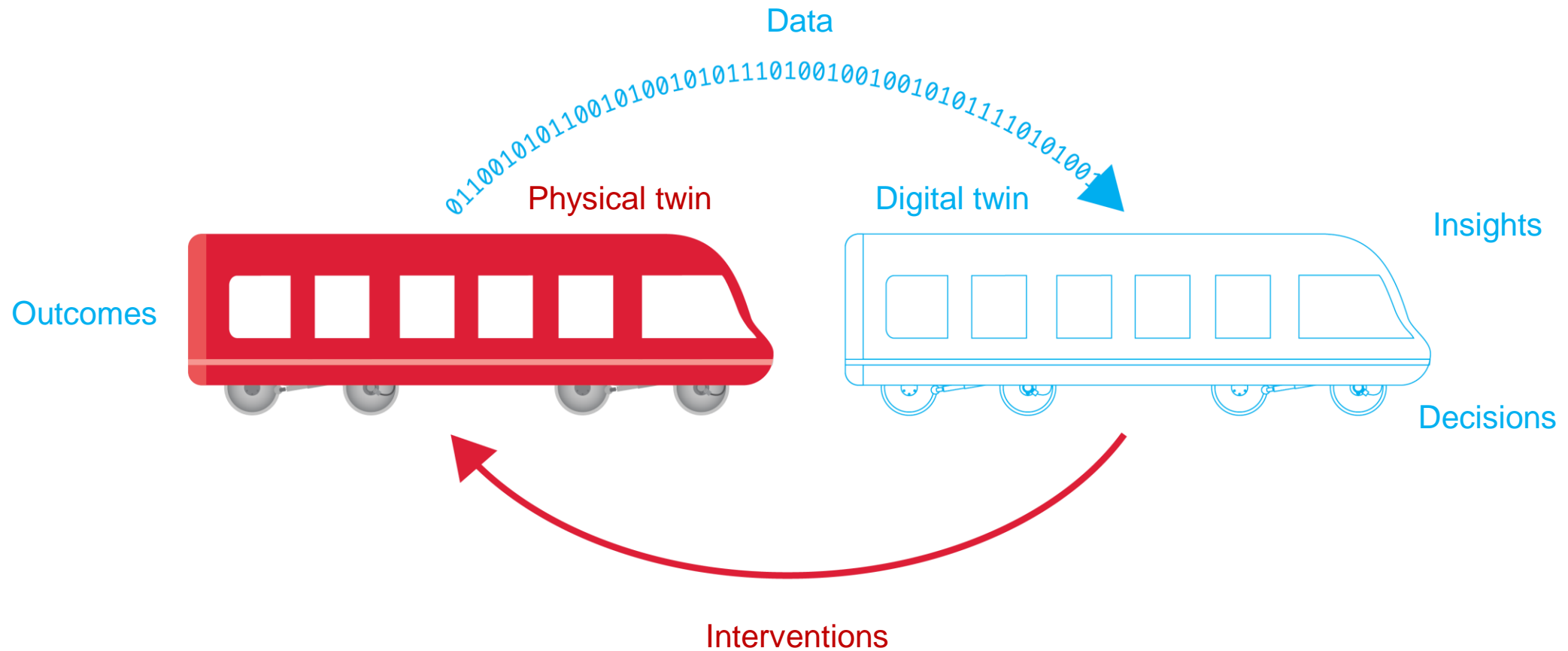


system of systems
system of services
cyber-physical system
sustainable system

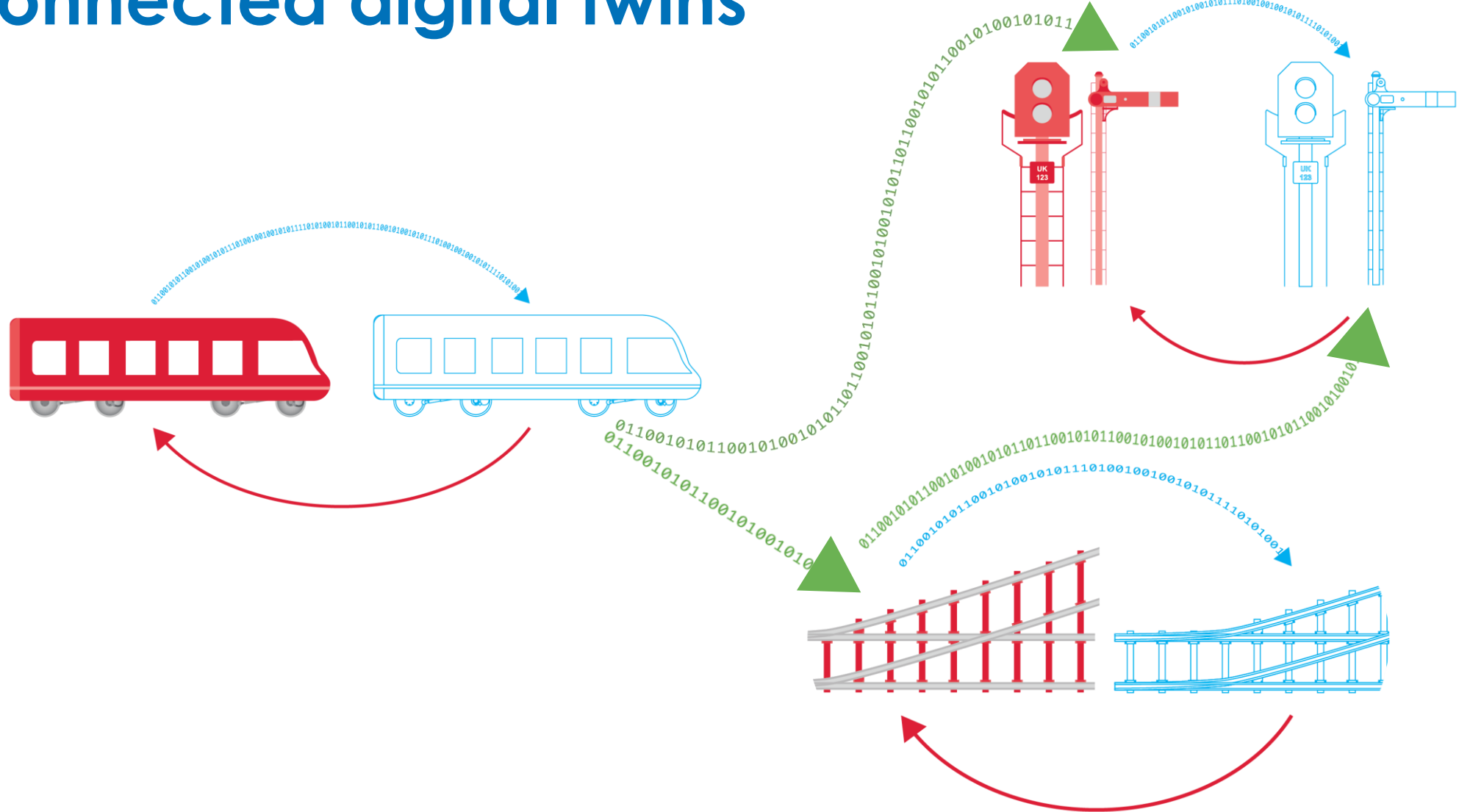
The information value chain



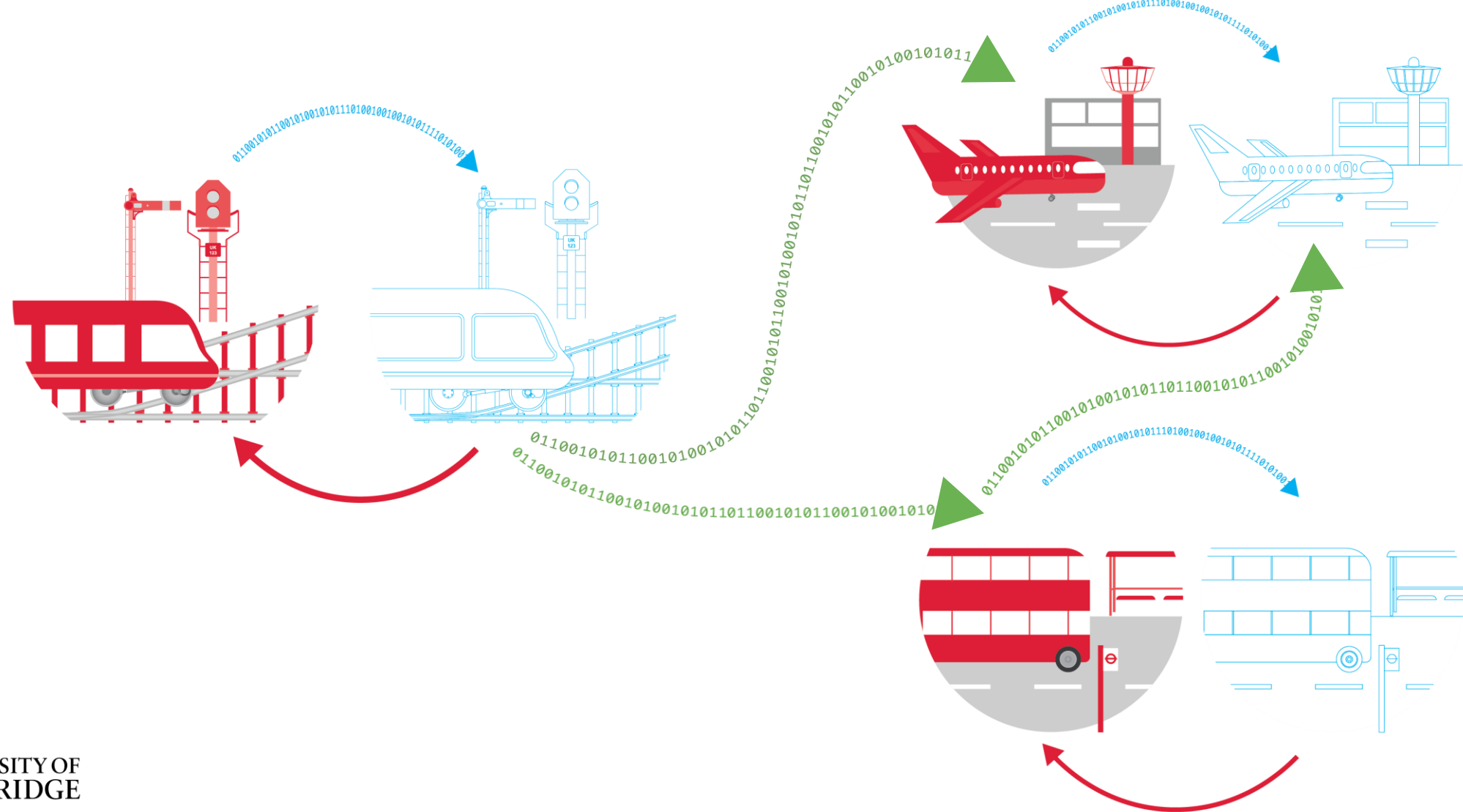
Digital twins



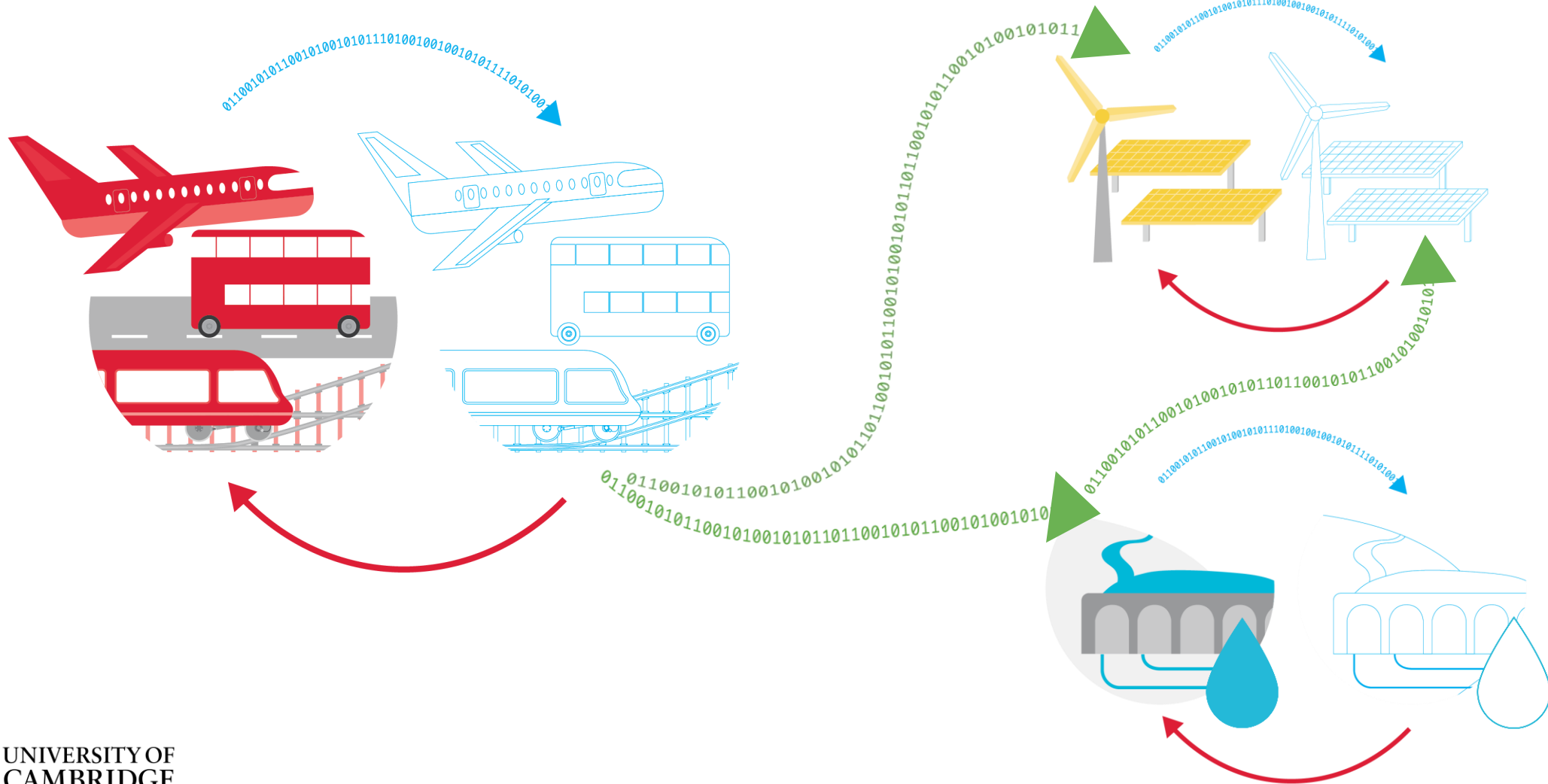
Connected digital twins



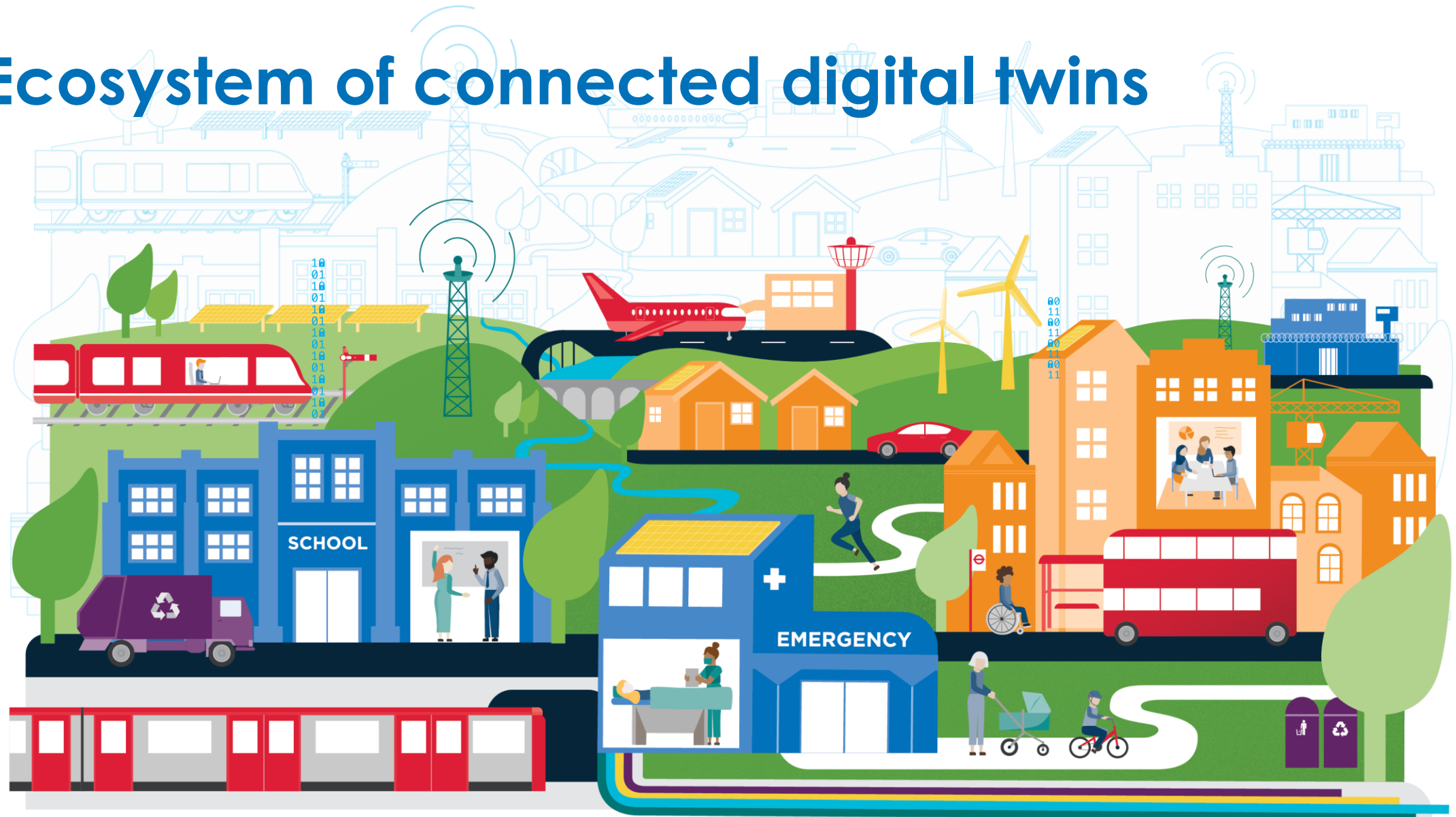
Ecosystem of connected digital twins



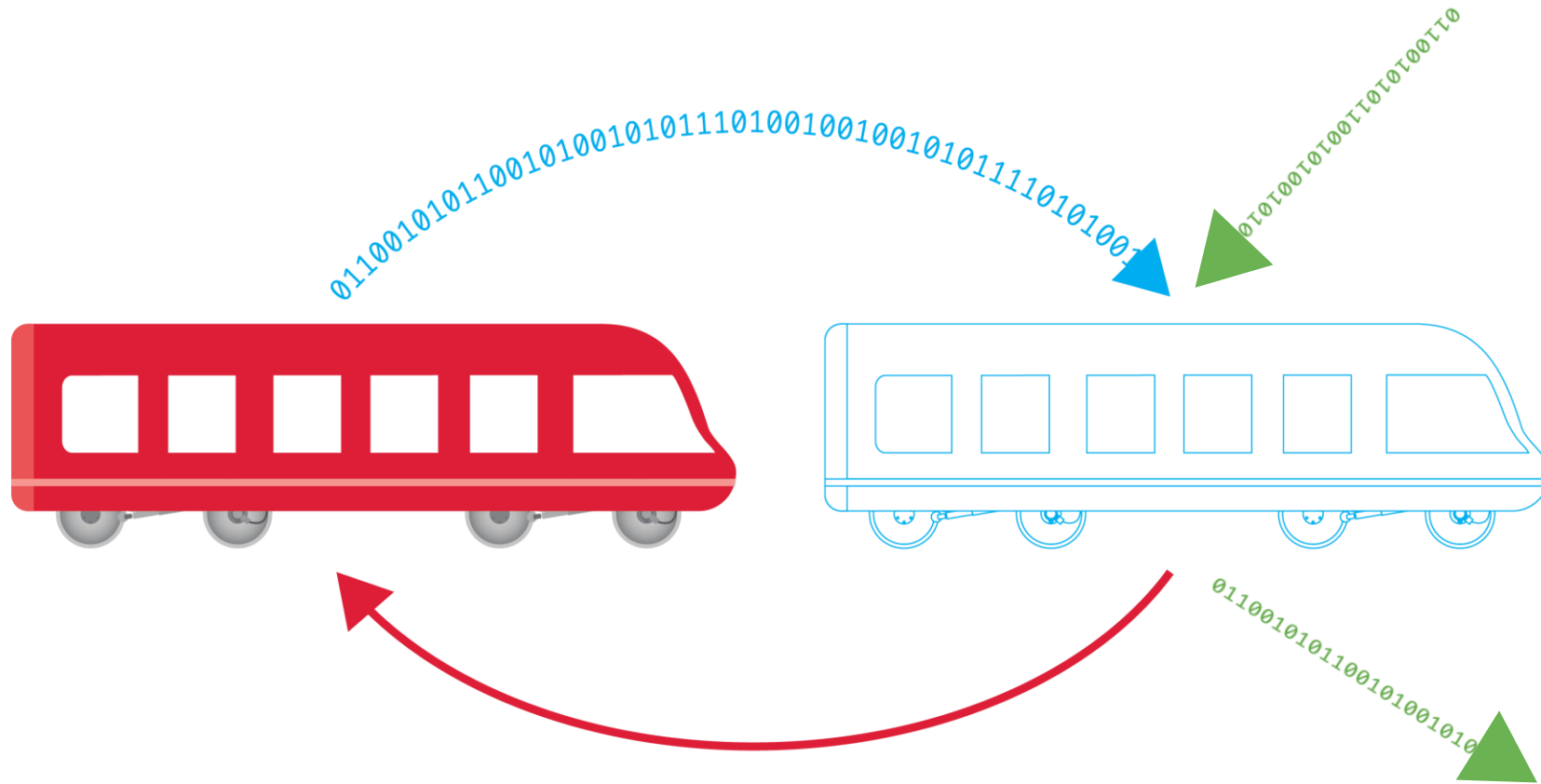
Ecosystem of connected digital twins



Ecosystem of connected digital twins



Connectable digital twins



Benefits of the National Digital Twin

Better outcomes for the public per whole-life pound

- **Benefits to society:** Improved stakeholder engagement. Better outcomes for the ultimate customers (the public – taxpayers/bill payers/fare payers/voters). Improved customer satisfaction and experience through higher-performing infrastructure and the services it provides.
- **Benefits to the economy:** Improved national productivity from higher-performing and resilient infrastructure operating as a system. Improved measurement of outcomes. Better outcomes per whole-life pound. Improved information security and thereby personnel, physical and cyber security.
- **Benefits to business:** New markets, new services, new business models, new entrants. Improved business efficiency from higher-performing infrastructure. Improved delivery efficiency, benefiting the whole construction value chain – investors, owners, asset managers, contractors, consultants, suppliers. Reduced uncertainty and better risk management.
- **Benefits to the environment:** Less disruption and waste. More reuse and greater resource efficiency – a key enabler of the circular economy in the built environment.

The background to the approach

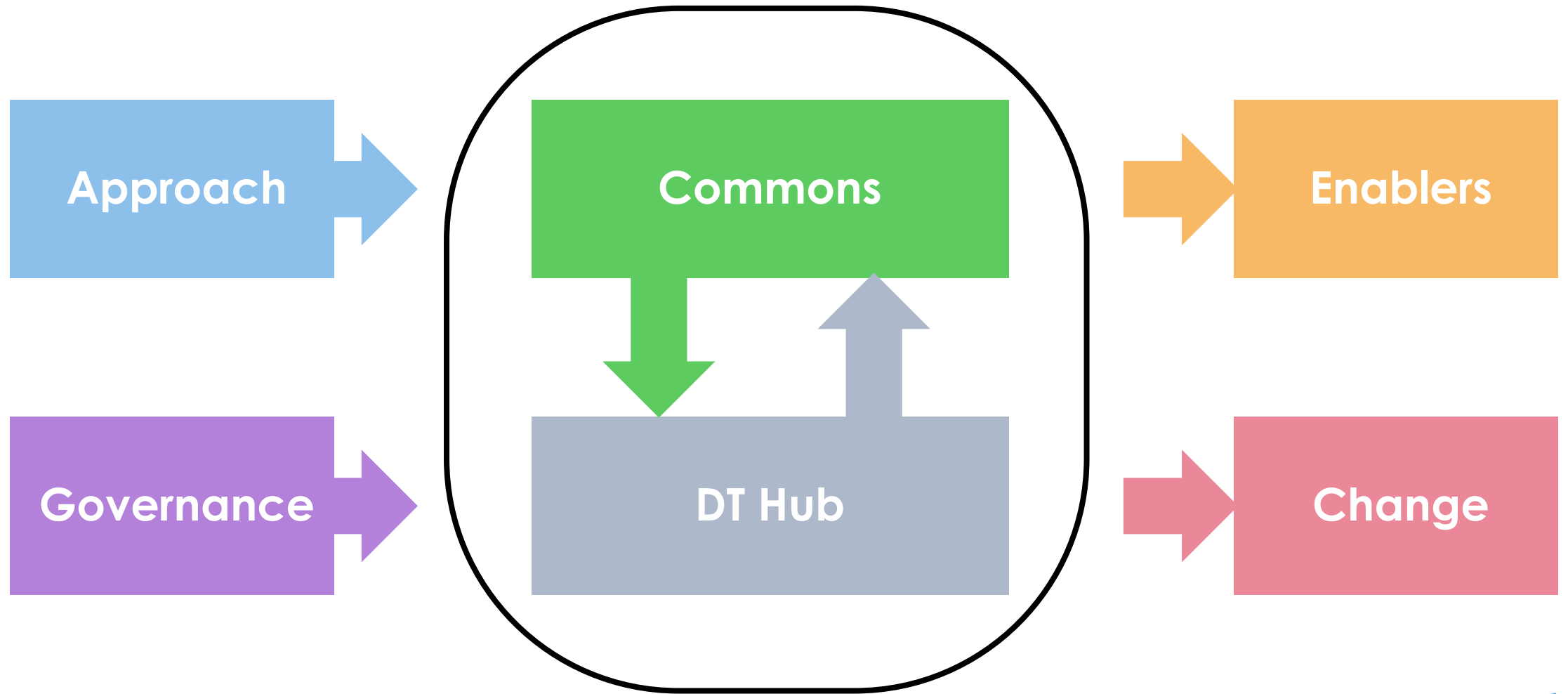
Top down
(Authoritarian)



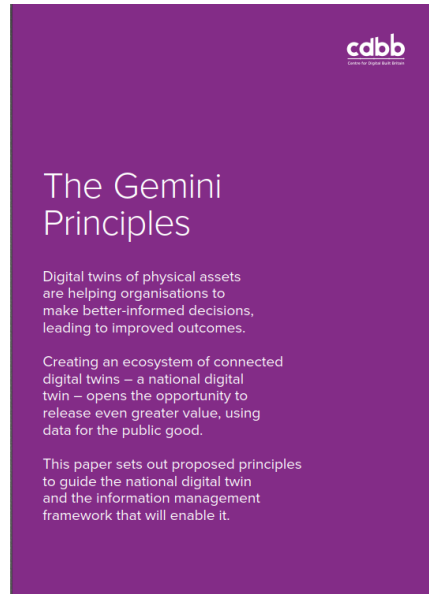
Bottom up
(Darwinian)



The core streams of the Roadmap



Guided by the Gemini Principles



Thank you